

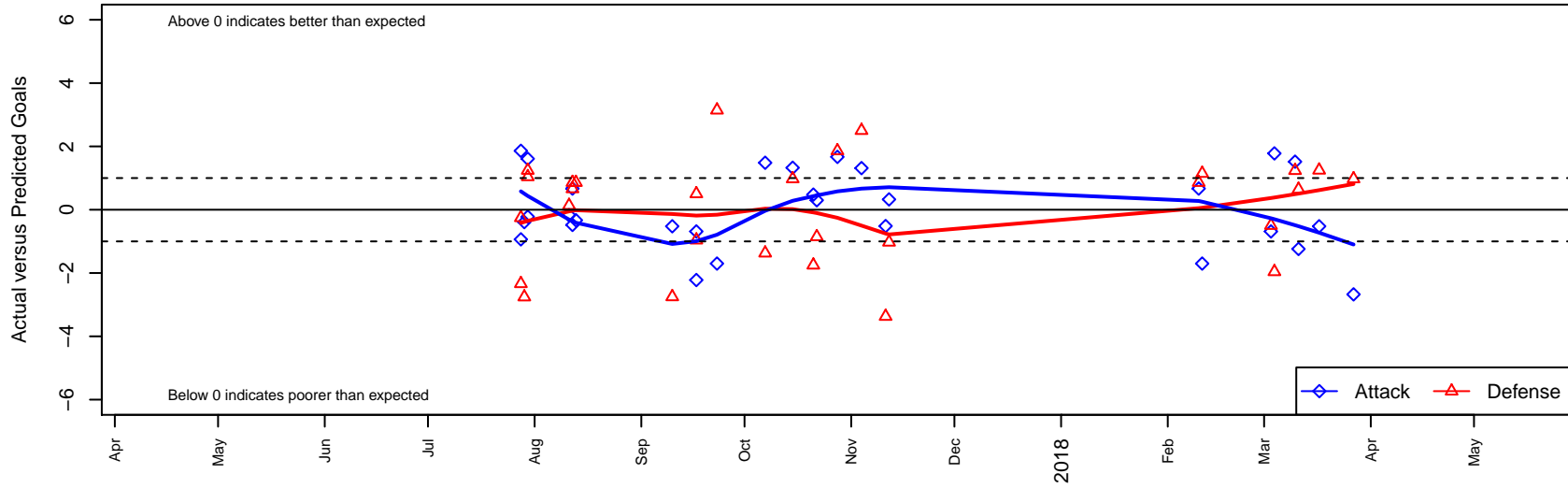
# Bend FC Timbers Red G05

Bend FC  
 Bend, OR  
 G05 total strength=938  
 attack=2.63 defense=0.99  
 fall league = PTT G05 Premier White  
 spr league = Spr OYS G05 Premier White

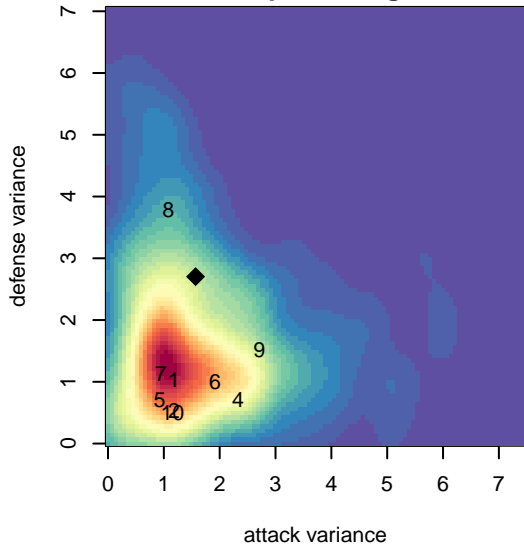
alt names used:  
 BEND FC TIMBERS 05 GIRLS RED (OR)  
 Bend FC Timbers 05G  
 BEND FC TIMBERS 05G RED (USA)  
 Bend FC Timbers 05G

Venues played:  
 2017 Oswego Nike Cup Silver Blue U13  
 2017 Bend Premier Cup Tobin Heath (Gold) Div  
 2017 PTT G05 Premier White  
 2017 Spr OYS G05 Premier White

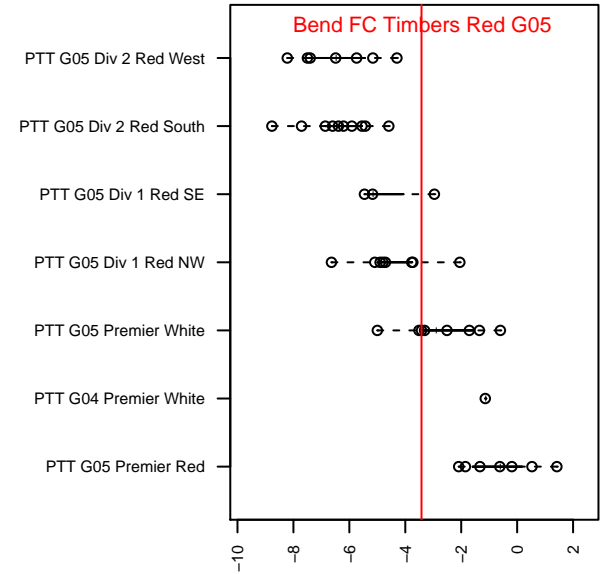
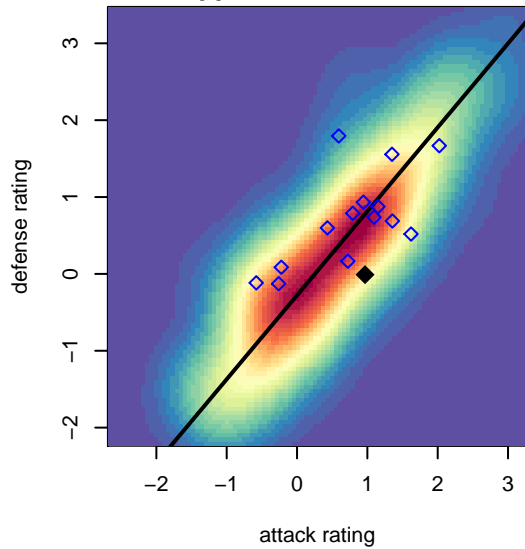
**Bend FC Timbers Red G05**  
 Dots are actual minus expected GF (blue circles) and GA (red triangles).  
 Blue line is smoothed change in attack strength. Red is smoothed change in defense strength.



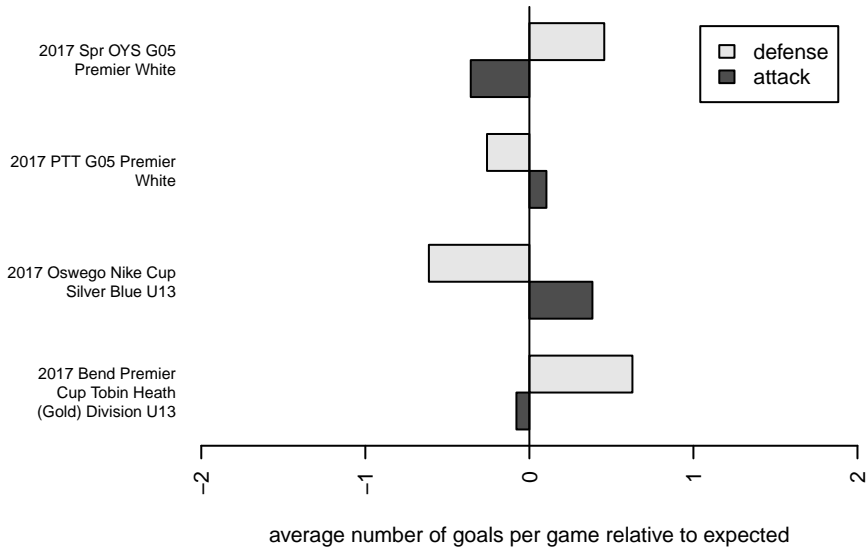
**attack and defense variance (black dot)  
relative to other teams  
and top 10 in region**



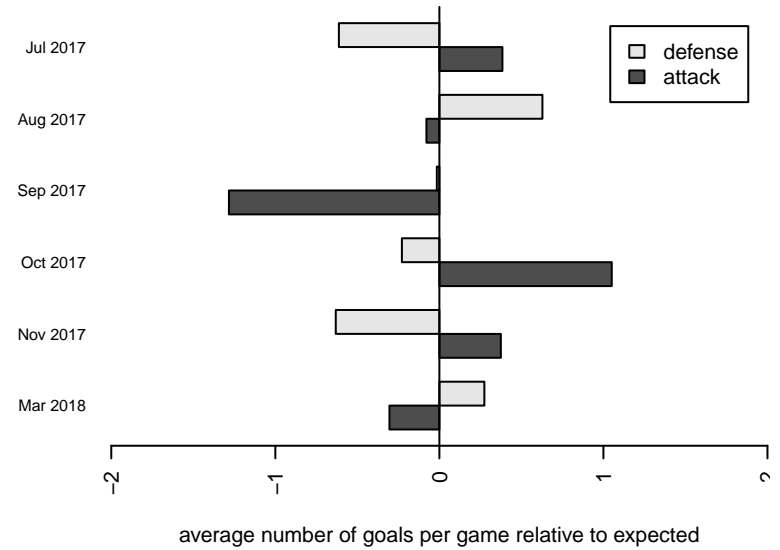
**attack and defense rating  
relative to others at age  
and all opponents in last 13 months**



**Performance relative to 13 month average**



**Performance relative to 13 month average**



| date       | home                         |   | away                         |   | venue                                    | pred.home | pred.away |
|------------|------------------------------|---|------------------------------|---|--|-----------|-----------|
| 2018-03-27 | Bend FC Timbers Red G05      | 0 | HSC GPS Newberg G05          | 0 | 2017 Spr OYS G05 Premier White           | 2.67      | 0.97      |
| 2018-03-17 | Bend FC Timbers Red G05      | 0 | WUFC Gold G05                | 1 | 2017 Spr OYS G05 Premier White           | 0.52      | 2.25      |
| 2018-03-11 | Bend FC Timbers Red G05      | 0 | Washington Timbers Red 2 G05 | 3 | 2017 Spr OYS G05 Premier White           | 1.24      | 3.64      |
| 2018-03-10 | Bend FC Timbers Red G05      | 3 | Rogue Valley Timbers Red G05 | 3 | 2017 Spr OYS G05 Premier White           | 1.48      | 4.24      |
| 2018-03-04 | THUSC Neon Green G05         | 4 | Bend FC Timbers Red G05      | 4 | 2017 Spr OYS G05 Premier White           | 2.04      | 2.22      |
| 2018-03-03 | BSC Portland Black G05       | 4 | Bend FC Timbers Red G05      | 0 | 2017 Spr OYS G05 Premier White           | 3.50      | 0.69      |
| 2018-02-11 | Crossfire OR LOSC Blue I G05 | 4 | Bend FC Timbers Red G05      | 0 | 2017 Spr OYS G05 Premier White           | 5.15      | 1.70      |
| 2018-02-10 | Westside Timbers Copa TS G05 | 1 | Bend FC Timbers Red G05      | 2 | 2017 Spr OYS G05 Premier White           | 1.86      | 1.33      |
| 2017-11-12 | HSC GPS Newberg G05          | 2 | Bend FC Timbers Red G05      | 3 | 2017 PTT G05 Premier White               | 0.97      | 2.67      |
| 2017-11-11 | Crossfire OR SSC Blue I G05  | 6 | Bend FC Timbers Red G05      | 1 | 2017 PTT G05 Premier White               | 2.63      | 1.52      |
| 2017-11-04 | Bend FC Timbers Red G05      | 2 | BSC Portland Black G05       | 1 | 2017 PTT G05 Premier White               | 0.69      | 3.50      |
| 2017-10-28 | Bend FC Timbers Red G05      | 3 | Westside Timbers Copa TS G05 | 0 | 2017 PTT G05 Premier White               | 1.33      | 1.86      |
| 2017-10-22 | Crossfire OR LOSC Blue I G05 | 6 | Bend FC Timbers Red G05      | 2 | 2017 PTT G05 Premier White               | 5.15      | 1.70      |
| 2017-10-21 | WUFC Gold G05                | 4 | Bend FC Timbers Red G05      | 1 | 2017 PTT G05 Premier White               | 2.25      | 0.52      |
| 2017-10-15 | Bend FC Timbers Red G05      | 4 | HSC GPS Newberg G05          | 0 | 2017 PTT G05 Premier White               | 2.67      | 0.97      |
| 2017-10-07 | Bend FC Timbers Red G05      | 3 | Crossfire OR SSC Blue I G05  | 4 | 2017 PTT G05 Premier White               | 1.52      | 2.63      |
| 2017-09-23 | Bend FC Timbers Red G05      | 0 | Crossfire OR LOSC Blue I G05 | 2 | 2017 PTT G05 Premier White               | 1.70      | 5.15      |
| 2017-09-17 | THUSC Neon Green G05         | 3 | Bend FC Timbers Red G05      | 0 | 2017 PTT G05 Premier White               | 2.04      | 2.22      |
| 2017-09-17 | BSC Portland Black G05       | 3 | Bend FC Timbers Red G05      | 0 | 2017 PTT G05 Premier White               | 3.50      | 0.69      |
| 2017-09-10 | Bend FC Timbers Red G05      | 0 | WUFC Gold G05                | 5 | 2017 PTT G05 Premier White               | 0.52      | 2.25      |
| 2017-08-13 | Bend FC Timbers Red G05      | 1 | Westside Timbers Copa TS G05 | 1 | 2017 Bend Premier Cup Tobin Heath (Gold) | 1.33      | 1.86      |
| 2017-08-12 | Bend FC Timbers Red G05      | 2 | Westside Timbers Copa TS G05 | 1 | 2017 Bend Premier Cup Tobin Heath (Gold) | 1.33      | 1.86      |
| 2017-08-12 | Bend FC Timbers Red G05      | 0 | NEU White G05                | 7 | 2017 Bend Premier Cup Tobin Heath (Gold) | 0.48      | 7.66      |
| 2017-08-11 | Bend FC Timbers Red G05      | 1 | Capital FC Timbers Red G05   | 3 | 2017 Bend Premier Cup Tobin Heath (Gold) | 1.17      | 3.13      |
| 2017-07-30 | THUSC Neon Green G05         | 1 | Bend FC Timbers Red G05      | 2 | 2017 Oswego Nike Cup Silver Blue U13     | 2.04      | 2.22      |
| 2017-07-30 | Bend FC Timbers Red G05      | 3 | WPFC Black G05               | 2 | 2017 Oswego Nike Cup Silver Blue U13     | 1.39      | 3.24      |
| 2017-07-29 | Bend FC Timbers Red G05      | 1 | WPFC Black G05               | 6 | 2017 Oswego Nike Cup Silver Blue U13     | 1.39      | 3.24      |
| 2017-07-28 | CUSC Cavaliers G05           | 1 | Bend FC Timbers Red G05      | 5 | 2017 Oswego Nike Cup Silver Blue U13     | 0.75      | 3.14      |

| <b>date</b> | <b>home</b>             |   | <b>away</b>    |   | <b>venue</b>                         | <b>pred.home</b> | <b>pred.away</b> |
|-------------|-------------------------|---|----------------|---|--------------------------------------|------------------|------------------|
| 2017-07-28  | Bend FC Timbers Red G05 | 3 | WUFC White G05 | 3 | 2017 Oswego Nike Cup Silver Blue U13 | 3.94             | 0.66             |